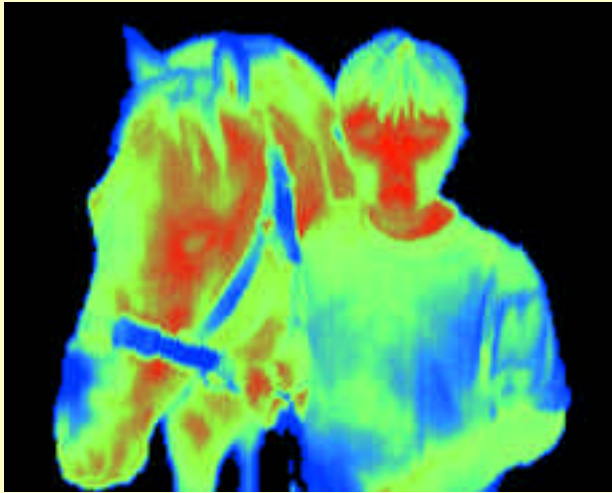


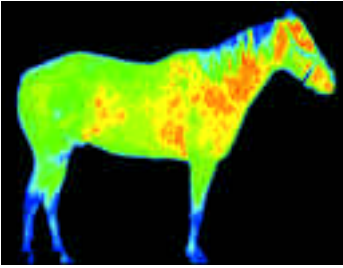
Meditherm **Vet2000**[®]

Maximizing the potential of thermography



Advanced Digital Infrared Thermal Imaging
specifically designed for veterinary applications





Meditherm **Vet2000** is a non-invasive diagnostic system using Digital Infrared Thermal Imaging to detect physiological problems. It also provides information about an animal's response to treatment and its subjective feeling of pain.

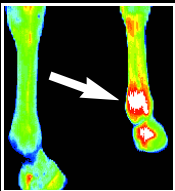
Meditherm Vet2000 has a history of successful performance and proven reliability, and is a useful complementary procedure to other diagnostic methods including x-ray, scintigraphy, and ultrasound. Benefits Include:

EARLY DIAGNOSIS AND TREATMENT ASSISTANCE in such problems as: inflammatory processes, neurological and vascular dysfunction, musculoskeletal injury and referred pain syndromes.

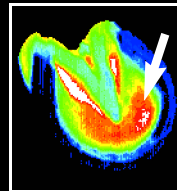
RELIABLE AND ACCURATE information for diagnosis, treatment, and prognosis, including pre-purchase exams.

PRECISE AND OBJECTIVE data from accurate measurements of thermal information.

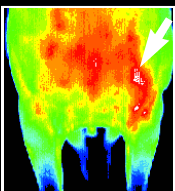
CONSIDERABLE FINANCIAL SAVINGS over conventional investigations, no consumables, minimal operating costs.



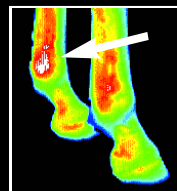
Slight lameness after gallop
Meditherm Vet2000 confirmed a localized inflammation at the bottom of the right tendon, consistent with an over-reach injury. Follow-up scans indicated when it was safe to resume work.



Acute lameness in pony's left foot, Hoof testers indicated soreness throughout toe region
Meditherm Vet2000 pinpointed a localized inflammation over the medial toe, from where an abscess was successfully drained.



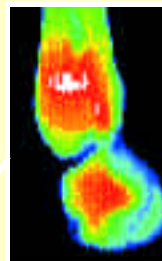
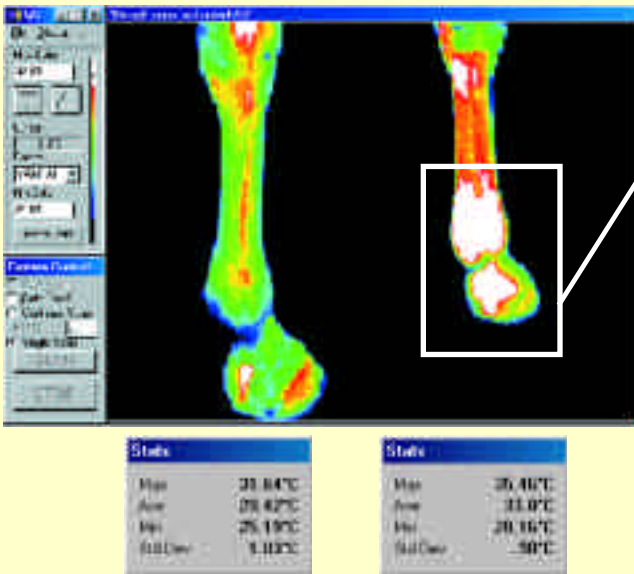
Difficult to diagnose uneven gait in front limbs
Meditherm Vet2000 shows inflammation in the front of the left shoulder. Treatment to the area quickly resolved the problem.



Racehorse pulled up lame
Meditherm vet2000 detected inflammation over medial sesamoid of left fetlock. Ultrasound showed some detachment of sesamoidean ligament.

CASE STUDY

This horse was only slightly lame, but with no obvious reason. He had probably overreached during his morning gallop. The trainer did not want to take any chances with a horse in full training so he asked for a Meditherm DITI scan. The localised pattern seen at the back of the fetlock was consistent with the injury suspected. After a few days of light exercise and cold therapy a re-scan showed that the horse had no problems in the tendons, ligaments or joints, and was fit to resume training. Had there been more serious damage, DITI findings would have prevented the horse from returning to work and causing further injury.



INTERPRETIVE REPORT

Significant inflammation is seen throughout the right front fetlock with a temperature differential of 3.82°C. Localization shows a focal transverse area of inflammation in the upper posterior part of the fetlock. There are patterns of hyperthermia seen throughout the tendons between the posterior right knee and fetlock with a particular area below the knee. No other significant thermal asymmetries are seen throughout the horse.

How Meditherm Vet2000 improves diagnostic accuracy

The Meditherm Vet2000 system uses a scanning-type infrared camera that measures body surface temperature, presenting the information as a digitized image. This image or 'thermogram', is made up of 47,092 individual pixels, with each pixel displaying an accurate temperature measurement sensitive to 0.01°C.

The normal body is thermally symmetrical : thermal asymmetries can indicate problems. Meditherm Vet2000 is the only system that achieves repeatability of accurate temperature measurements crucial to the reliable comparison of multiple images needed to detect asymmetry.

A thermogram of a horse is a colormap divided throughout the entire range of temperature seen by the camera. With some systems, such as the focal plane array camera, the colormap is distributed over a wider range which includes the cooler background surrounding the horse. Thermal mapping is more accurate with the Meditherm vet2000 because it's total range of color and temperature is applied to the horse alone, which results in greater sensitivity and specificity.

Meditherm **Vet2000** is portable, affordable, and easy to use. Your complete package includes :

- Scanner, case, stand and laptop computer with preloaded configured software
- A comprehensive operator training course, certification to technician level
- Online thermogram interpretation service available
- Full 12-month written warranty
- First year service contract with technical support



Meditherm vet2000 Specifications For Standard Clinical Applications

Camera

- Coolant: Thermoelectrically cooled
- Weight: 2 kg
- Size: 14cm W x 43cm H x 11cm D
- Operating Temperatures: 10°C to 37°C

Image display

- 10 x True colour palettes
- 1 x 16-step grayscale.
- 3 x 16-step Isotherm.
- Dynamic range: 24 bits
- Image stored in TIF format
- Image size 95kb
- Temperature step sizes: 0.1 - 2°C

Image Acquisition

- Temperature ranges:
10°C to 40°C (Standard Calibration)
- Thermal sensitivity: < 0.01°C
- Field of view: 30.5° x 22.5°
- Spatial resolution:
0.4 mm (camera at 15 cm)
1mm (camera at 40 cm)
- Resolvable elements: 244 x 193 pixels
- Image scan rate: 8 seconds (47K pixels)
5 seconds (23.5K pixels)
- Emissivity correction: User variable
0-100% default setting 100%

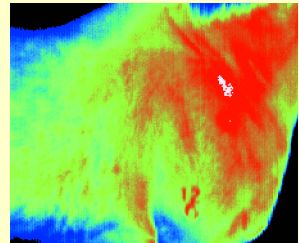
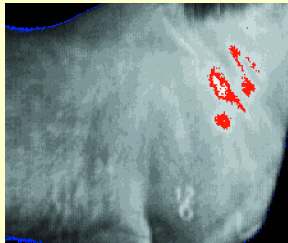
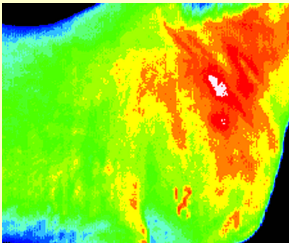
For more information, contact:

Why choose the Meditherm Vet2000?

Meditherm **Vet2000** maximizes the potential of thermography for the best possible diagnosis and treatment by delivering a higher degree of sensitivity and specificity than other systems.

- *Only* thermography system specifically designed and calibrated for optimal operation in narrow temperature range of metabolic heat
- Efficient thermoelectric cooling eliminates problems of thermal drift
- Most accurate readings because each pixel is an individually referenced measurement which can be compared to any other pixel
- Whole horse imaging allows observation of all thermal asymmetries
- Instantly saves images to laptop or PC without any intermediate steps; image manipulation and statistical data immediately available
- Enormous data storage, as TIF's allow access, manipulation, and analysis at any time
- Software runs camera, as well as providing comprehensive data display and image manipulation
- Can focus on region of interest from 2 inches to infinity, while detecting 100% infrared radiation
- Permits less critical protocols without sacrificing accuracy and reliability
- Can be used in most clinics and stables with multi-image exams taking less than 15 minutes
- Maintenance-free, no consumables, simpler and more durable

With the Meditherm Vet2000 veterinarians have several options for viewing thermograms, insuring the best possible diagnosis.



The colormaps can be selected or changed to enhance the visualization of significant patterns relating to pathology.